



CASARiO

BUILDING
POWER LAB

1 INTRODUCTION	03
2 APPROACH AND METHODOLOGY	04
3 NETWORKS AND ALLIANCES	04
4 LINES OF ACTION	05
5 TOOLKITS FOR ACTIVATION	06
6 FEATURED INITIATIVES	07
↳ Territories of Collaboration	08
↳ Biocultural Ring of Greater La Plata	10
↳ Totoreros - Environmental Restoration of Pampa Wetlands	12
↳ WEWAC The Water Currency	14
↳ Public Mapping and Networked Communications	16
7 RECOGNITION AND INTERNATIONAL IMPACT	18
8 EXHIBITIONS AS LIVING SYNTHESIS	19
9 CASA RÍO MEMORY	20
10 NEW TERRITORIAL CONSTELLATIONS	21
10 VISION FOR THE FUTURE	22

1 | INTRODUCTION



Casa Río is, above all, a real place -a river house located on the south bank of the Río de la Plata. It is also a territorial organization for art and ecology and a laboratory for building the power to act collectively. Founded in 2017 by members of the Ala Plástica collective (1991–2016), its practice is rooted in more than three decades of situated engagement in the La Plata Basin, with resonances in other parts of the world, weaving together critical thought and ecosocial transformation. Our efforts do not conform to the institutional logic of art or the organizational techniques of project management. We work with communities and ecosystems at grips with particular

conflicts, activating processes that link sensibility, knowledge and action. We are guided by an ethics of collaboration and the conviction that territories are vital spaces to be inhabited with care, attention and imagination. From the perspective of art as a research tool, Casa Río articulates collective experiences that restore value to local knowledge, strengthen lifeways and promote regenerative political and ecological frameworks. We operate as a hub linking artists, educators, scientists, technicians, activists and grassroots leaders, forging bonds that enable other ways of inhabiting and transforming the commons.

2 | APPROACH AND METHODOLOGY



Casa Río is founded on a way of working that privileges long-term processes, unlikely alliances and sensibility as a political force. Our methodology is not based on applying models but on building socio-symbolic infrastructure born of dialogue and investigation. Each intervention is a toolkit adapted to local conditions, so as to amplify

singular voices, connect disparate forms of knowledge and enable real transformations. We understand art as a form of mediation and as a common language to activate relationships, generate shared reflection and mobilize actions that cut across the symbolic, ecological and political spheres.

3 | NETWORKS AND ALLIANCES



Casa Río is part of the Wetlands Without Borders coalition, a bioregional network that brings together organizations from Argentina, Bolivia, Brazil, Paraguay and the Netherlands for the defense of territories of water and life. This alliance is inscribed in a genealogy of articulations that, since the 1990s, has advanced an environmental agenda forged from the bottom up, across the La Plata Basin. Our practice is strengthened at the intersection of communities, territorial movements, technical and scien-

tific institutions and spaces of critical research. We work with women, youth, agricultural producers, artists and social organizations that sustain active relationships with their home territories and seek new ways to inhabit and defend them. These alliances amplify the reach of our interventions, open spaces for policy impact and help consolidate processes that combine ecological regeneration, grassroots culture and legal transformation with a focus on ecosocial justice.

4 | LINES OF ACTION

↓ Biocultural regeneration



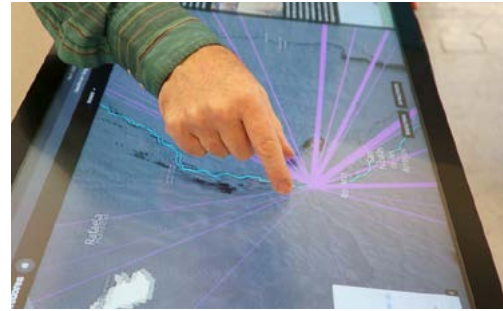
We promote biocultural corridors that reconnect territories by weaving together environmental restoration, activation of traditional crafts, food sovereignty and the recovery of local knowledge. These actions arise from the link between biodiversity, grass-roots culture and sustainable lifeways.

↓ Art as territorial mediation



We use art to catalyze encounters, reflection and action. Through walks, cartographic analysis, roundtables, exhibitions and a low-power radio that operates temporarily on available frequencies, we activate spaces for thinking and acting.

↓ Critical cartography and situated knowledge production



Through cartographic research, we generate group study spaces to create a distributed network of perception throughout the La Plata Basin. With this experience we aim to visualize, interpret and invigorate everyday processes of territorial integration -developed by the people who live in, perceive and understand their local environment.

↓ Legal advocacy and ecosocial justice



We contribute to legislative initiatives such as the Biocultural Corridors Law and national campaigns like “Wetlands Law Now.” We participate in the construction of public policies that emerge from territorial processes and support legal frameworks anchored in environmental justice.

5 | TOOLKITS FOR ACTIVATION

↳ Mutable Radio

The radio is a medium of articulation among coastal localities and a space for the emergence of new symbolic, environmental and organizational practices. A mobile antenna and transmitter are set up to broadcast conversations at the water's edge.



↳ Biocultural Table

The Biocultural Table is a circular space of dialogue, designed to spur conversations among large numbers of people. It is assembled, taken apart and moved from everyday environments to museums and cultural institutions to enable spaces for discussion and decision-making.



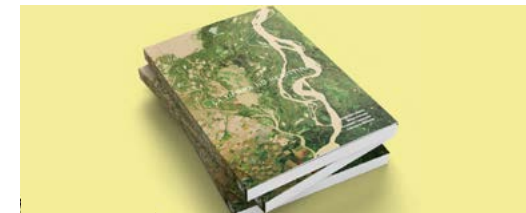
↳ Maps

For critical analyses and knowledge production in territorial exercises, digital and printed maps are essential tools for pursuing the study of local situations and their links to global events.



↳ Texts and Diagrams

For phases of analysis as well as exhibitions and public presentations, texts and diagrams are fundamental didactic elements. They also amplify dialogue and exchange.





An immersive experience moving through the Paraná Delta and the Río de la Plata Estuary, intertwining art, pedagogy and territorial action on the basis of two core questions: Who designs the territory? For whom is it designed? The proposal invites an embodied,

situated approach to waterlogged landscapes, activating river routes as a form of embodied knowledge. Through collaborative campaigns, bonds are woven with communities and local hubs to identify conflicts, imagine shared futures and strengthen biocultural

knowledge in dialogue with the ecosystems that underlie it. Drifting, situated learning and active listening are central to a practice that exceeds traditional educational formats and is anchored in the living experience of the territory.



+ territorios.casariolab.art



[More info](#)



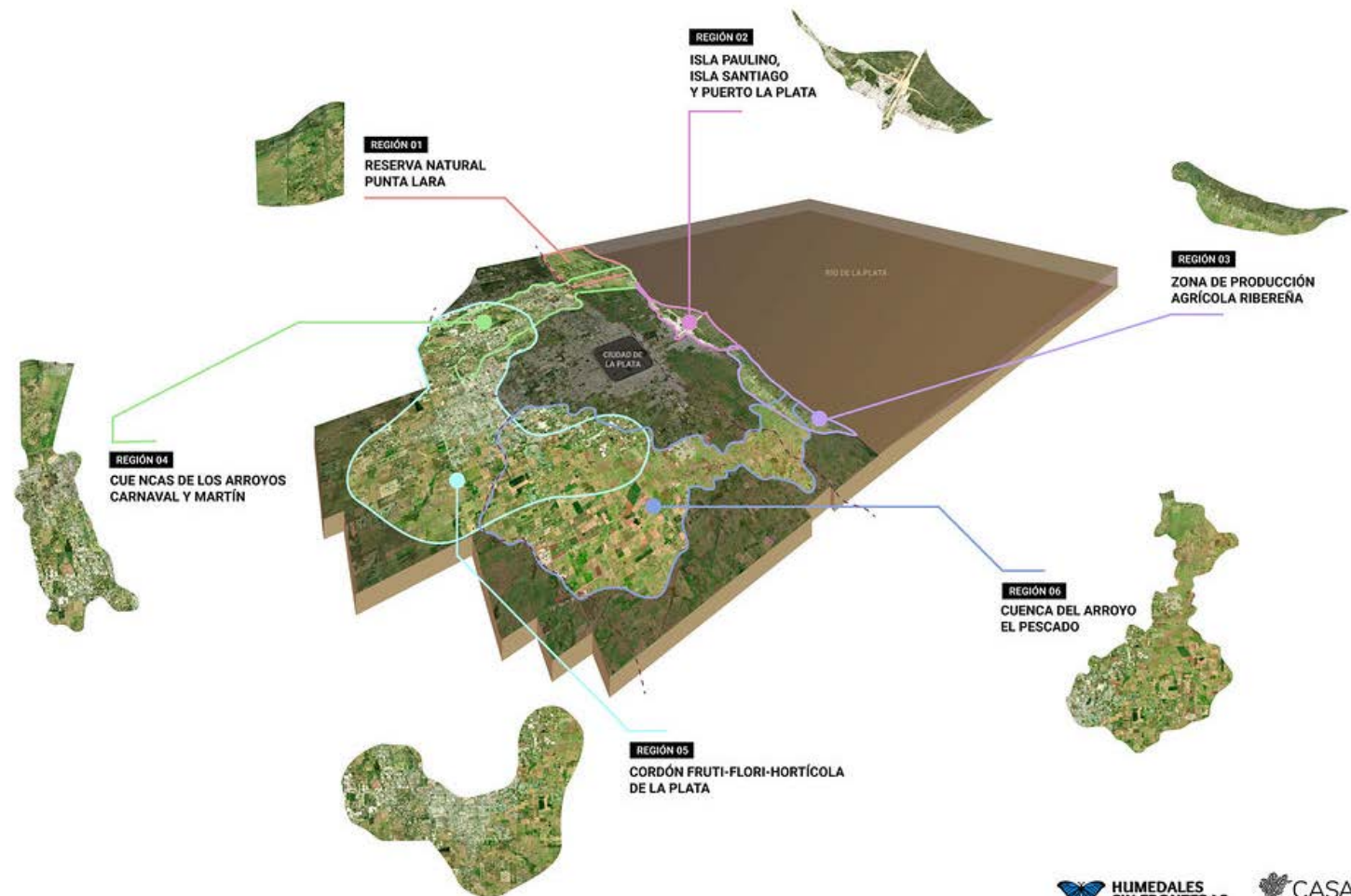
[Watch video](#)



The methodology articulates cartographic analysis, exploratory walks and collective construction of the territory. Across some 81,000 hectares, natural structures, habitats and productive processes are identified using open tools and partici-

patory workshops. Native Walks activate memories and local knowledge, while the Biocultural Dialogue Table brings together communities, scientists, technicians, organizations and governments to promote frameworks such as the Biocultural

Corridors Law. Actions like Wicker Gleaning and the UNDA Biomorphc Capsule are used to experiment with regenerative practices. Walking is embraced as a sensitive method of interpreting and bonding with the landscape.

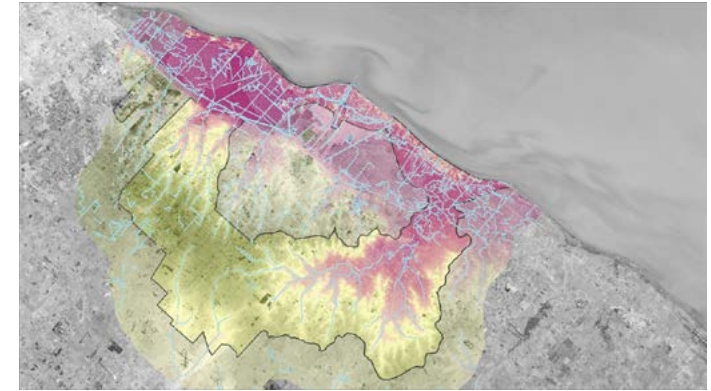


[More info](#)



[Watch video](#)





6 | FEATURED INITIATIVES

▾ Totoreros - Environmental Restoration of Pampa Wetlands

● El Carpincho Lagoon | Junín | ARG

A biocultural restoration exercise in a crucial wetland of the Salado River system, conducted in partnership with women from the Los Totoreros neighborhood. It combines training

in artisanal techniques, ecological actions and community revitalization. Deploying a collaborative methodology, it activates processes of learning, restoration and territorial organization

in dialogue with local knowledge and traditional practices linked to cattails (*Typha domingensis*). The initiative proposes a restoration that is also cultural, affective and situated.



[More info](#)



[Watch video](#)



6 | FEATURED INITIATIVES

▾ WEWAC | The Water Currency

● Santurbán Páramo | COL

WEWAC is a proposal carried out together with Colombian media-makers, blockchain developers and programmers. It combines art, technology and community action to protect the Santurbán Páramo, a crucial ecosys-

tem that supplies water to millions of people, regulates climate and harbors unique biodiversity. Through a digital token backed by the “value of existence” of the páramo, WEWAC promotes a non-extractive economy. The project

integrates green contracts, forensic art, a Decentralized Autonomous Organization at community level and basic-income systems to recognize and strengthen the role of communities that care for the water and the territory.



+ wewac.co



[More info](#)



6 | FEATURED INITIATIVES

Public Mapping and Networked Communications

A platform that combines art, technology and critical pedagogy to chart tensions between biocultural and extractive processes in the La Plata Basin. Through territorial exercises, sensitive document-

tation, GIS and open-source tools, we create collaborative maps that reveal corridors of care and dispossession. The mapping process activates distributed perceptual networks, investigates the

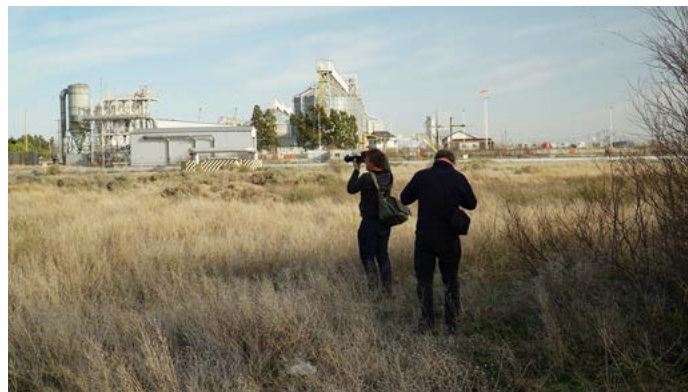
metabolic rift between provider territories and consumer centers, and consolidates biocultural citizenship through situated training, multiscalar representation and international alliances.



[+ map.casariolab.art](http://map.casariolab.art)



[More info](#)



7 | RECOGNITION AND INTERNATIONAL IMPACT

Casa Río's practice has been recognized for its capacity to articulate art, biocultural regeneration and ecosocial transformation in concrete contexts. In 2024, the project "Totorerros - Environmental Restoration of Pampas Wetlands at Laguna El Carpincho (Jujín)" received support from the G20 Global Land Initiative's land restoration grant, highlighting its innovative community-based approach. Casa Río is also part of the SENSE program of the Gwaertler Foundation

(Switzerland), which supports artistic experiences rooted in local territories. In Argentina our organization contributes to the National Assessment Commission for the Conservation and Sustainable Use of Biological Diversity, via the official recognition of our biocultural corridor mapping under the heading of OMEC (Other Effective Area-Based Conservation Measures). All this reflects an international profile anchored in sustained territorial engagement.



8 | EXHIBITIONS AS LIVING SYNTHESIS

For Casa Río, exhibitions are not an end-point but an active part of the process. They function as spaces of translation where lessons growing from the territories can be shared in other contexts, opening new political, aesthetic and pedagogical resonances. Each exhibition synthesizes what has been lived and contested, and enables conversations and actions beyond the place of origin.

A key example is “Teachings of the Flood,” presented at Künstlerhaus Stuttgart, Germany, from November 2024 to April 2025. The exhibition offered an expansive reading of the La Plata Basin as an interdependent territory, marked by tension and dispute between biocul-

tural and extractive processes. It also developed a bi-continental approach, connecting European publics with situated practices in South America via signifiers of affective and political proximity.

The show was organized around two lines of research: the advance of extractivism and strategies of care. Through visual displays, digital cartography, sound maps, Mutable Radio broadcasts and tactile installations, it showed how global dynamics of monoculture, logistics infrastructure and property speculation impact ecosystems and bodies at different scales. The exhibition centered on the creative diversity of biocultural corridors in confrontation with the

corporate exploitation of extractive corridors.

The concept of “metabolic rift” became a keyword, pointing to a force of the world market that interrupts biogeochemical cycles at the Earth-system scale, with tangible consequences on the ground.

Among the devices developed, notable elements included a circular table (a replica of the Biocultural Dialogue Table) where images of territorial work were circulated; a photographic carpet scaled to match a satellite pixel of the Paraná Delta and bathed in sound recordings of riverside voices, connecting remote viewing with embodied speech; and finally a figurative riverbed made

of soybeans, accompanied by hanging banners with phrases and questions in three languages, opening perception to multiple ways of narrating the fundamental conflicts.

More than a representation, “Teachings of the Flood” was an immersive experience - a space to think with the body and senses about the relationship between water, life and territory. A place where the intimate and the geopolitical, the local and the systemic, intertwine to activate a biospheric consciousness. In this way art functions as an infrastructure for dialogue, not an end in itself, opening up urgent questions about the future of rivers and the fate of territories that still resist.



9 | CASA RÍO MEMORY

↘ Ala Plástica Archive

The archive gathers records and documents of interventions by the artistic and environmental organization Ala Plástica. The group developed unconventional initiatives from 1991 to 2016, articulating ecology, self-organized networks, knowledge production, recovery of local economies and social sculpture based on models of rhizomatic expansion and participatory research at a bioregional scale.

↘ Casa Río Library

A space specialized in social context art, featuring valuable reference works and room for convivial encounters. The material available to visitors offers formative resources to artists and researchers interested in practices that respond to the need for concrete contact with life, overcoming artistic neutrality.



10 | NEW TERRITORIAL CONSTELLATIONS

↳ Chakana Yachay Wasi

● Cusco | PER

An Andean Knowledge Center for the Future launched by Casa Río in collaboration with local organizations in the Sacred Valley of Cusco, with the support of UNESCO Peru. It articulates art, spirituality, territorial memory, agroecology and knowledge production from a multilingual Andean perspective. It includes a residency, a

living archive, a sustainability laboratory based on traditional knowledge and an educational platform. It seeks to strengthen biocultural regeneration and epistemic sovereignty through territorial tools built in collaboration with women, youth and local knowledge-bearers.





Casa Río aims at the consolidation and diffusion of regenerative biocultural hubs in diverse territories of the La Plata Basin and beyond. We aim to scale up from below, weaving sensitive and collaborative alliances with com-

munities, institutions and networks that share a common vision in the face of current ecological and social crises. Our horizon is to build living infrastructures for regeneration, care and collective imagination.

CONTACT

+ casariolab.art

✉ contacto@casariolab.art

☎ +54 221 6720466

📍 calle 42 entre 23 y 21
Villa del Plata
C.P 1931
Punta Lara, Bs. As., Argentina.

